

DATA SHEET

Anti human C4d Antibody (C4dpAb)

Cat. no.: BI- RC4D

Source: rabbit polyclonal

Quantity: 250 µl/vial

Form: liquid IgG fraction, purified by protein G chromatography

Immunogen: synthetic peptide (15-mer peptide corresponding to aa 1242-1256 of C4) specific for human complement split product C4d coupled to KLH (keyhole limpet haemocyanine).

Specificity: The antibody will identify human complement split product C4d

Application: The antibody has been tested for use on paraffin sections and frozen sections of human tissue. Working protocol available.
Recommended dilution for immunohistochemistry: 1:30 – 1:50
Pretreatment of slides by pressure cooking (5 minutes at +125°C in TRIS/EDTA buffer pH 8.5) is highly recommended for antigen retrieval.

Stability: Storage and transport temperature: +4°C.
The antibody is stable at +4°C up to the expiry date.

Shelf life: Expiry date is stated on the label.

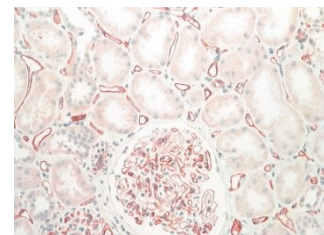
Literature:

1. Regele H et al. "Endothelial C4d deposition is associated with inferior kidney allograft outcome independently of cellular rejection". Nephrol Dial Transplant 2001, 16:2058-66

2. Böhmig GA et al. C4d-positive acute humoral renal allograft rejection: effective treatment by immunoabsorption. J Am Soc Nephrol, 2001 Nov;12(11):2482-9

3. Böhmig GA et al. Capillary C4d deposition in kidney allografts: a specific marker of alloantibody-dependent graft injury. J Am Soc Nephrol. 2002 Apr;13(4):1091-9.

4. Regele H et al. „Capillary deposition of complement split product C4d in renal allografts is associated with basement membrane injury in peritubular and glomerular capillaries: a contribution of humoral immunity to chronic allograft rejection". J Am Soc Nephrol. 2002, 13:2371-80



rev.no: 170306 (replacing 120229)

FICHA TECNICA

Anticuerpo anti C4d humano (C4dpAb)

Referencia: BI- RC4D

Huesped: polyclonal de conejo

Cantidad: 250 µl/vial

Present.: Fracción IgG líquida IgG, purificada por cromatografía de proteína G.

Inmunógeno: peptide sintético (15-mer correspondiente a los aa 1242-1256 de C4) específico para el producto del complemento humano procedente de la escisión C4d acoplado a KLH (keyhole limpet haemocyanine).

Especificidad: El anticuerpo reconoce el producto del complemento C4d procedente de la escisión.

Aplicación: El anticuerpo ha sido testado para su utilización en secciones de tejido humano incluido en parafina y en secciones de tejido humano en congelación. sections of human tissue. Existe un protocolo de trabajo disponible. Dilución recomendada para inmunohistoquímica: 1:30 – 1:50 Para la recuperación antigénica, se recomienda realizar un pretratamiento de los portas con olla a presión (10 min a presión de 1 bar, en tampón citrato 10mM pH 6.0).

Estabilidad: Temperatura de almacenaje y transporte: + 4°C
El anticuerpo es estable a 4°C hasta la fecha de caducidad.

Vida media: La fecha de caducidad se indica en la etiqueta del producto.

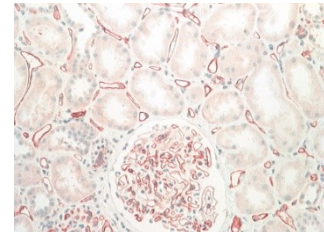
Literature:

1. Regele H et al. "Endothelial C4d deposition is associated with inferior kidney allograft outcome independently of cellular rejection". Nephrol Dial Transplant 2001, 16:2058-66

2. Böhmig GA et al. C4d-positive acute humoral renal allograft rejection: effective treatment by immunoadsorption. J Am Soc Nephrol, 2001 Nov;12(11):2482-9

3. Böhmig GA et al. Capillary C4d deposition in kidney allografts: a specific marker of alloantibody-dependent graft injury. J Am Soc Nephrol. 2002 Apr;13(4):1091-9.

4. Regele H et al. „Capillary deposition of complement split product C4d in renal allografts is associated with basement membrane injury in peritubular and glomerular capillaries: a contribution of humoral immunity to chronic allograft rejection". J Am Soc Nephrol. 2002, 13:2371-80



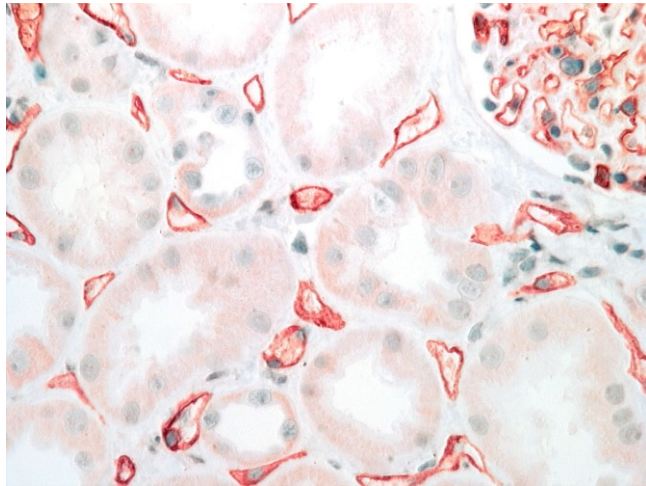
rev.no: 170306 (replacing 120229)



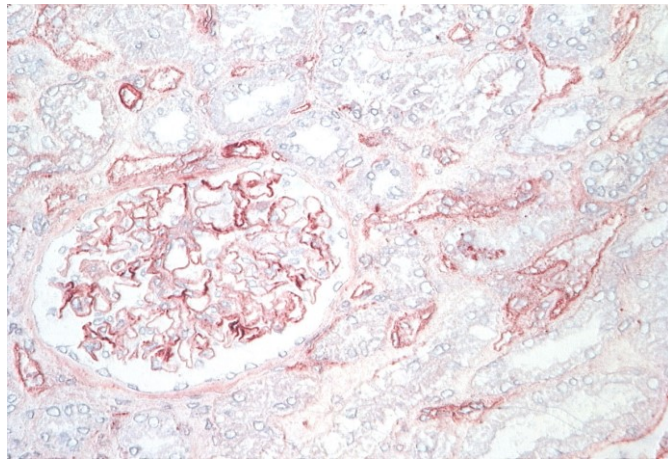
Biomedica Medizinprodukte GmbH & Co KG, A-1210 Wien, Divischgasse 4
Tel. +43/1/291 07 45, Fax +43/1/291 07 85, E-mail export@bmgrp.com, www.bmgrp.com

CE BIOMEDICA

Microphotographs of Anti human C4d Antibody (C4dpAb)

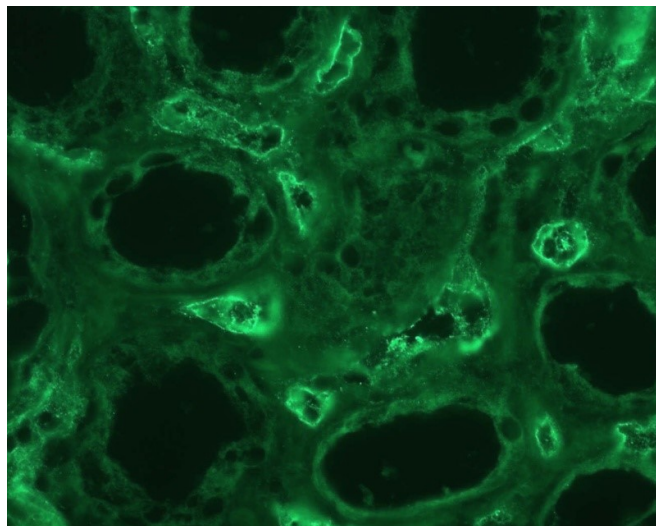


paraffin embedded tissue sections



Cryosections

Immunofluorescence Microphotographs of Anti human C4d Antibody (C4dpAb)



Dilution 1:20

rev.no: 170306 (replacing 120229)